

**Delineation of Geographical Constituencies of the  
Seventh Term of the Legislative Council**

<b>Geographical Constituencies (Constituency Code)</b>	<b>Districts Involved</b>	<b>No. of District Council Constituencies Areas</b>	<b>Population (Projected population by District as at 2021) [Deviation from the resulting number<sup>1</sup>(%)]</b>	<b>Relevant Plan No.<sup>2</sup></b>
Hong Kong Island East (LC1)	Eastern, Wan Chai	48	718,600 [-5.2%]	LCCA/R/2021/HK-E
Hong Kong Island West (LC2)	Central and Western, Southern, Islands	42	698,900 [-7.8%]	LCCA/R/2021/HK-W
Kowloon East (LC3)	Kwun Tong, south-eastern part of Wong Tai Sin <sup>3</sup>	45	771,800 [+1.8%]	LCCA/R/2021/KLN-E
Kowloon West (LC4)	Yau Tsim Mong, Sham Shui Po	45	780,000 [+2.9%]	LCCA/R/2021/KLN-W
Kowloon Central (LC5)	Kowloon City, north-western part of Wong Tai Sin <sup>4</sup>	45	778,900 [+2.8%]	LCCA/R/2021/KLN-C
New Territories South East (LC6)	Sai Kung, eastern part of Sha Tin <sup>5</sup>	44	746,400 [-1.5%]	LCCA/R/2021/NT-SE

<sup>1</sup> The population quota is the quotient in dividing the projected population of Hong Kong by the total number of elected seats from all geographical constituencies in Hong Kong, which is 379,010. The resulting number is given by multiplying the population quota by the number of members to be returned to the Legislative Council by that geographical constituency pursuant to any electoral law. Therefore, the resulting number is  $379,010 \times 2 = 758,020$ .

<sup>2</sup> The plan number of the Index Map is LCCA/R/2021/INDEX.

<sup>3</sup> Including Choi Wan East, Choi Wan South, Choi Wan West, Chi Choi, and Choi Hung.

<sup>4</sup> Including Lung Tsui, Lung Ha, Lung Sheung, Fung Wong, Fung Tak, Lung Sing, San Po Kong, Tung Tau, Tung Mei, Lok Fu, Wang Tau Hom, Tin Keung, Tsui Chuk & Pang Ching, Chuk Yuen South, Chuk Yuen North, Tsz Wan West, Ching Oi, Ching On, Tsz Wan East, and King Fu.

<sup>5</sup> Including Hoi Nam, Chung On, Kam To, Ma On Shan Town Centre, Wu Kai Sha, Lee On, Fu Lung, Kam Ying, Yiu On, Heng On, Tai Shui Hang, On Tai, Yu Yan, Kwong Hong, and Kwong Yuen.

<b>Geographical Constituencies (Constituency Code)</b>	<b>Districts Involved</b>	<b>No. of District Council Constituencies Areas</b>	<b>Population (Projected population by District as at 2021) [Deviation from the resulting number<sup>1</sup>(%)]</b>	<b>Relevant Plan No.<sup>2</sup></b>
New Territories North (LC7)	North, north-western part of Yuen Long <sup>6</sup>	40	694,200 [-8.4%]	LCCA/R/2021/NT-N
New Territories North West (LC8)	Tuen Mun, south-eastern part of Yuen Long <sup>7</sup>	48	791,700 [+4.4%]	LCCA/R/2021/NT-NW
New Territories South West (LC9)	Kwai Tsing, Tsuen Wan	50	824,600 [+8.8%]	LCCA/R/2021/NT-SW
New Territories North East (LC10)	Tai Po, western part of Sha Tin <sup>8</sup>	45	775,100 [+2.3%]	LCCA/R/2021/NT-NE

<sup>6</sup> Including Ha Tsuen, Ping Shan Central, Shing Yan, Tin Shing, Tin Yiu, Yiu Yau, Tsz Yau, Kingswood South, Shui Oi, Shui Wah, Chung Wah, Chung Pak, Kingswood North, Yuet Yan, Ching King, Fu Yan, Yat Chak, Tin Heng, Wang Yat, Ping Shan North, Fairview Park, and San Tin.

<sup>7</sup> Including Fung Nin, Yuen Long Centre, Fung Cheung, Yuen Lung, Shap Pat Heung Central, Shui Pin, Nam Ping, Pek Long, Yuen Long Tung Tau, Shap Pat Heung North, Shap Pat Heung East, Shap Pat Heung West, Ping Shan South, Hung Fuk, Kam Tin, Pat Heung North, and Pat Heung South.

<sup>8</sup> Including Sha Tin Town Centre, Lek Yuen, Wo Che Estate, City One, Yue Shing, Wong Uk, Sha Kok, Pok Hong, Shui Chuen O, Jat Chuen, Chun Fung, Sun Tin Wai, Chui Tin, Hin Ka, Lower Shing Mun, Wan Shing, Keng Hau, Tin Sum, Chui Ka, Tai Wai, Chung Tin, Sui Wo, Fo Tan, Chun Ma, Di Yee, and Bik Woo.



深 圳 市 SHENZHEN SHI



二零二一年立法會地方選區界線  
(與區界線重疊)

2021 Legislative Council  
Geographical Constituency Boundary  
(coincides with District Boundary)

二零二一年立法會地方選區界線

2021 Legislative Council  
Geographical Constituency Boundary

區界線  
District Boundary

特別行政區界  
Boundary of Special Administrative Region

## 二零二一年立法會地方選區

2021 Legislative Council Geographical Constituencies

代號 Code	名稱 Name	所包括的 地方行政區 Districts Included	參考圖則編號 Reference Plan No.
LC 1	香港島東 Hong Kong Island East	東區 Eastern District 灣仔區 Wan Chai District	LCCA/R/2021/HK-E
LC 2	香港島西 Hong Kong Island West	中西區 Central & Western District 南區 Southern District 離島區 Islands District	LCCA/R/2021/HK-W
LC 3	九龍東 Kowloon East	觀塘區 Kwun Tong District 黃大仙區東南部 South-eastern part of Wong Tai Sin District	LCCA/R/2021/KLN-E
LC 4	九龍西 Kowloon West	油尖旺區 Yau Tsim Mong District 深水埗區 Sham Shui Po District	LCCA/R/2021/KLN-W
LC 5	九龍中 Kowloon Central	九龍城區 Kowloon City District 黃大仙區西北部 North-western part of Wong Tai Sin District	LCCA/R/2021/KLN-C
LC 6	新界東南 New Territories South East	西貢區 Sai Kung District 沙田區東部 Eastern part of Sha Tin District	LCCA/R/2021/NT-SE
LC 7	新界北 New Territories North	北區 North District 元朗區西北部 North-western part of Yuen Long District	LCCA/R/2021/NT-N
LC 8	新界西北 New Territories North West	屯門區 Tuen Mun District 元朗區東南部 South-eastern part of Yuen Long District	LCCA/R/2021/NT-NW
LC 9	新界西南 New Territories South West	葵青區 Kwai Tsing District 荃灣區 Tsuen Wan District	LCCA/R/2021/NT-SW
LC 10	新界東北 New Territories North East	大埔區 Tai Po District 沙田區西部 Western part of Sha Tin District	LCCA/R/2021/NT-NE

# 二零二一年立法會地方選區分界圖索引

## 2021 LEGISLATIVE COUNCIL GEOGRAPHICAL CONSTITUENCY BOUNDARIES INDEX MAP



SCALE 1:105 000      比例尺

比例尺

圖則編號  
Plan No.

LCCA/R/2021/INDEX

二零二一年四月版 April 2021 Edition

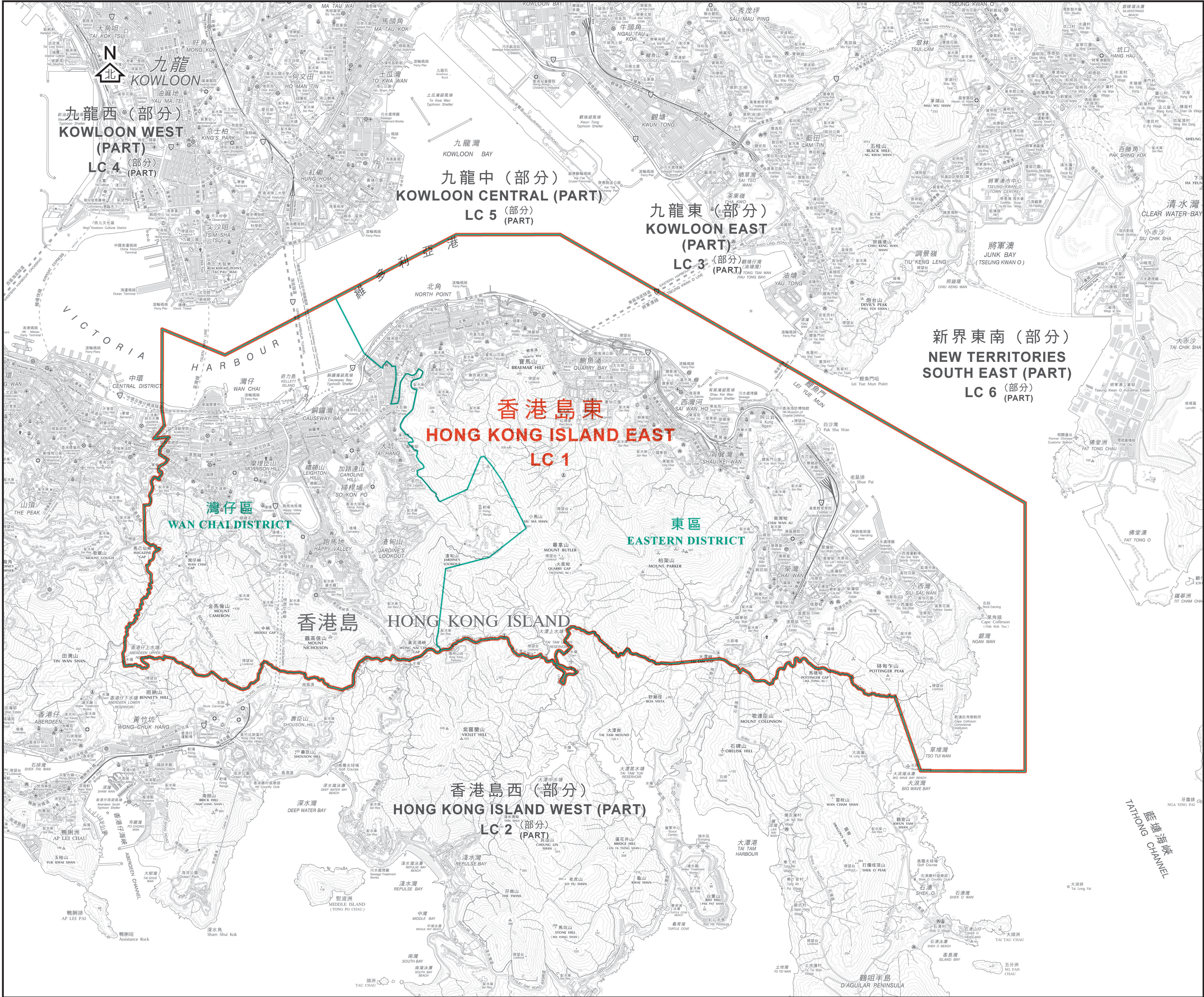
選舉事務處刊印

Published by the Registration and Electoral Office

版權所有 未經許可 不得複製 ©2021 Copyright reserved - reproduction by permission only

地政總署測繪處繪製  
Cartography by Survey & Mapping Office, L.





二零二一年立法會地方選區界線  
(與區界線重疊)

2021 Legislative Council  
Geographical Constituency Boundary  
(coincides with District Boundary)

二零二一年立法會地方選區界線  
2021 Legislative Council  
Geographical Constituency Boundary

區界線  
District Boundary

二零二一年立法會地方選區 2021 Legislative Council Geographical Constituency		
代號 Code	名稱 Name	所包括的地方行政區 Districts Included
LC 1	香港島東 Hong Kong Island East	東區 Eastern District 灣仔區 Wan Chai District

行政長官會同行政會議根據《2021年完善選舉制度(綜合修訂)條例草案》就地方選區的劃定  
於二零二一年四月十三日通過此圖則

This was the plan approved by the Chief Executive in Council on 13 April 2021 for the purpose of delineating geographical constituencies specified under the Improving Electoral System (Consolidated Amendments) Bill 2021

二零二一年立法會地方選區分界圖 — 香港島東選區

2021 LEGISLATIVE COUNCIL GEOGRAPHICAL CONSTITUENCY BOUNDARIES — HONG KONG ISLAND EAST CONSTITUENCY

0100020003000

050010001500200025003000

0100020003000

050010001500200025003000

SCALE 1:20 000 比例尺

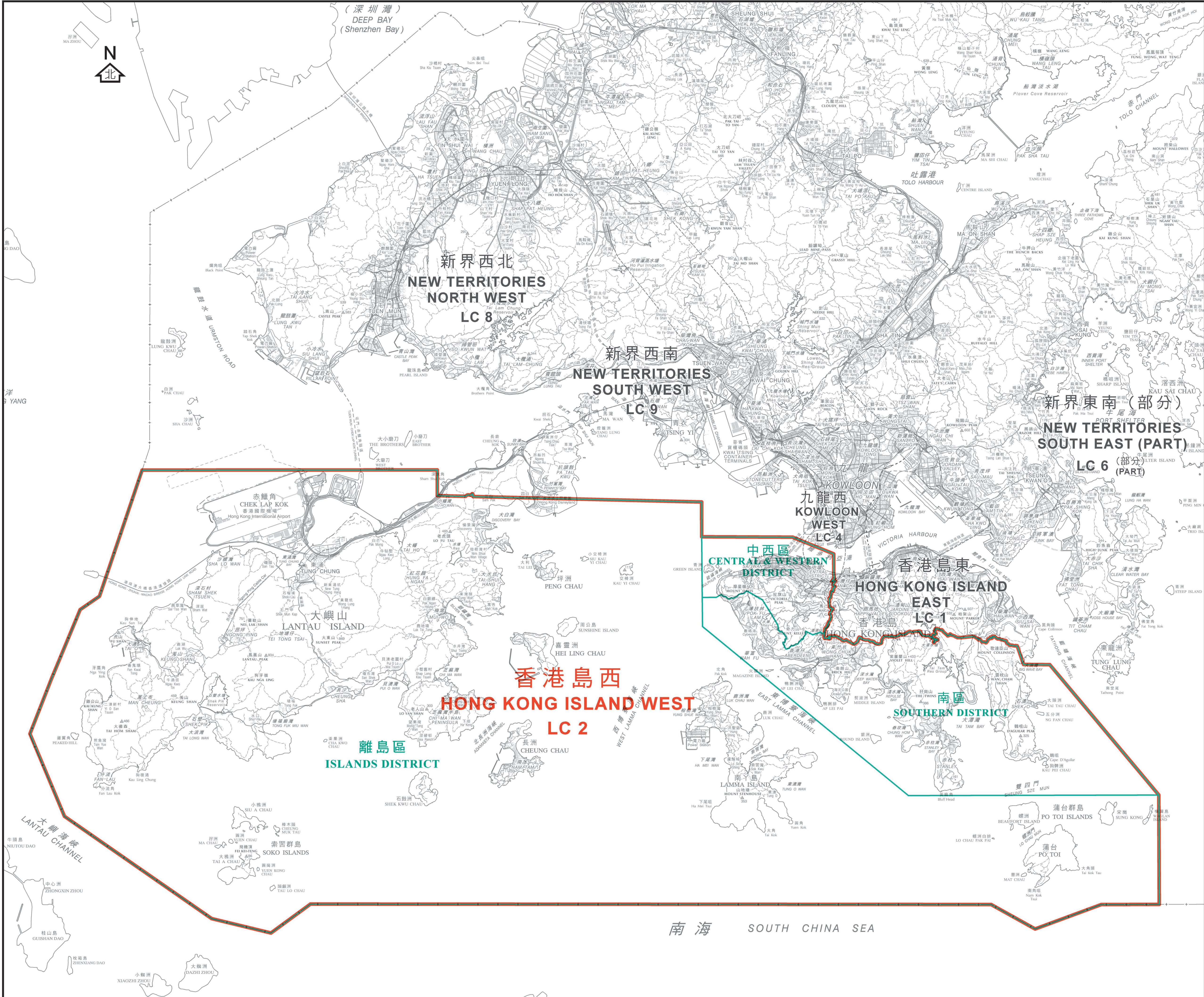
圖則編號  
Plan No. LCCA/R/2021/HK-E

二零二一年四月版  
April 2021 Edition

選舉事務處刊印  
Published by the Registration and Electoral Office

版權所有 未經許可 不得複製 © 2021 Copyright reserved - reproduction by permission only  
地政總署測繪處繪製  
Cartography by Survey & Mapping Office, Lands Department





- 二零二一年立法會地方選區界線  
(與區界線重疊)
- 2021 Legislative Council  
Geographical Constituency Boundary  
(coincides with District Boundary)
- 二零二一年立法會地方選區界線
- 2021 Legislative Council  
Geographical Constituency Boundary
- 區界線
- District Boundary
- 特別行政區界
- Boundary of Special Administrative Region

二零二一年立法會地方選區 2021 Legislative Council Geographical Constituency		
代號 Code	名稱 Name	所包括的地方行政區 Districts Included
LC 2	香港島西 Hong Kong Island West	中西區 Central & Western District  南區 Southern District  離島區 Islands District

行政長官會同行政會議根據《2021年完善選舉制度(綜合修訂)條例草案》就地方選區的劃定於二零二一年四月十三日通過此圖則

This was the plan approved by the Chief Executive in Council on 13 April 2021 for the purpose of delineating geographical constituencies specified under the Improving Electoral System (Consolidated Amendments) Bill 2021

二零二一年立法會地方選區分界圖 — 香港島西選區

2021 LEGISLATIVE COUNCIL GEOGRAPHICAL CONSTITUENCY BOUNDARIES — HONG KONG ISLAND WEST CONSTITUENCY



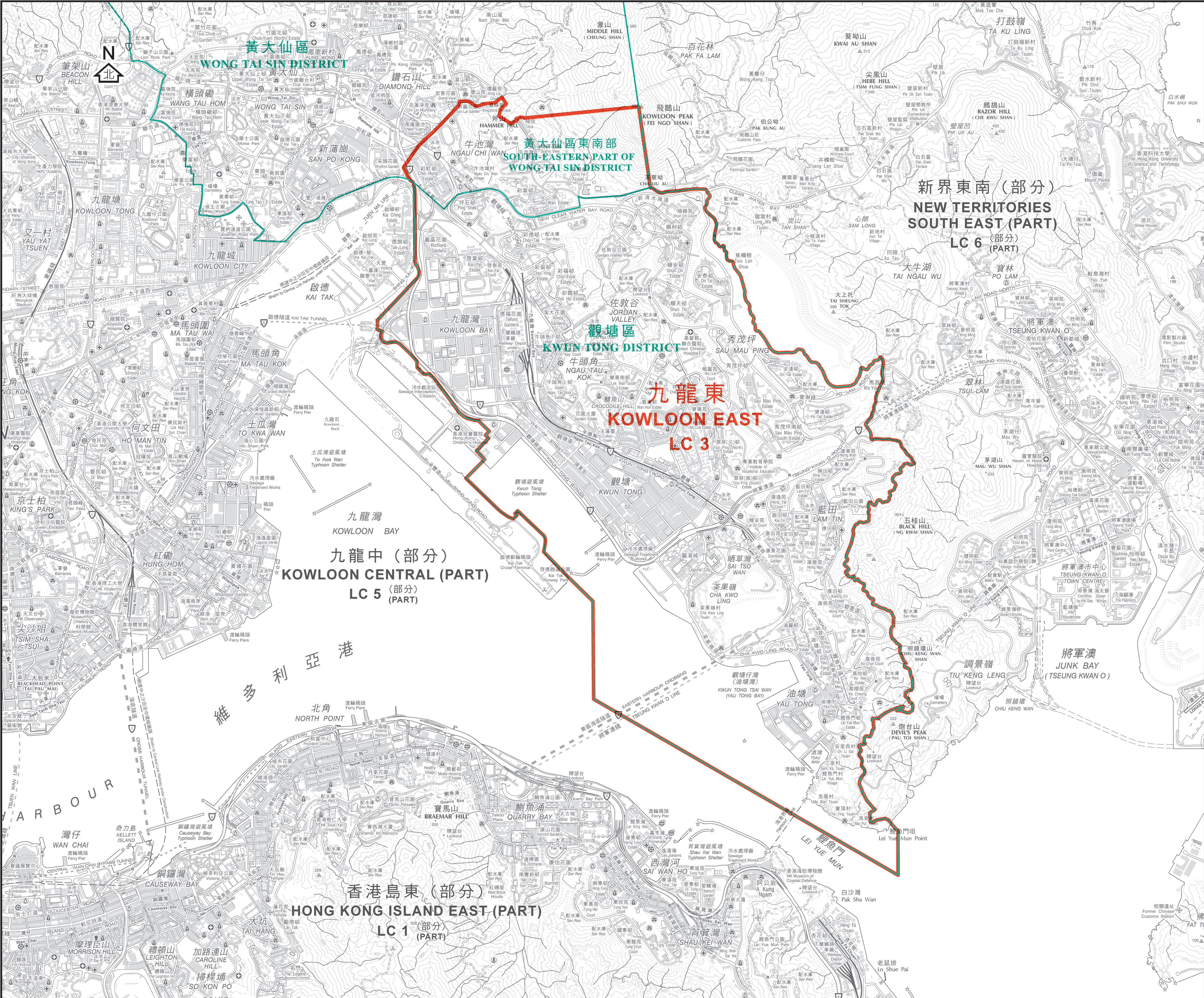
圖則編號  
Plan No. LCCA/R/2021/HK-W

二零二一年四月版  
April 2021 Edition

選舉事務處刊印  
Published by the Registration and Electoral Office

版權所有 未經許可 不得複製 © 2021 Copyright reserved - reproduction by permission only  
地政總署測繪處繪製  
Cartography by Survey & Mapping Office, Lands Department





二零二一年立法會地方選區界線  
(與區界線重疊)

2021 Legislative Council  
Geographical Constituency Boundary  
(coincides with District Boundary)

二零二一年立法會地方選區界線

2021 Legislative Council  
Geographical Constituency Boundary

區界線

District Boundary

二零二一年立法會地方選區 2021 Legislative Council Geographical Constituency		
代號 Code	名稱 Name	所包括的地方行政區 Districts Included
LC 3	九龍東 Kowloon East	觀塘區 Kwun Tong District  黃大仙區東南部 <sup>1</sup> South-eastern part of Wong Tai Sin District <sup>1</sup>

<sup>1</sup> 所包括的區議會選區  
<sup>1</sup> District Council Constituency Areas Included

彩雲東  
Choi Wan East

彩雲南  
Choi Wan South

彩雲西  
Choi Wan West

池彩  
Chi Choi

彩虹  
Choi Hung

行政長官會同行政會議根據《2021年完善選舉制度(綜合修訂)條例草案》就地方選區的劃定於二零二一年四月十三日通過此圖則

This was the plan approved by the Chief Executive in Council on 13 April 2021 for the purpose of delineating geographical constituencies specified under the Improving Electoral System (Consolidated Amendments) Bill 2021

二零二一年立法會地方選區分界圖 — 九龍東選區

2021 LEGISLATIVE COUNCIL GEOGRAPHICAL CONSTITUENCY BOUNDARIES — KOWLOON EAST CONSTITUENCY

0 500 1000 1500 2000 2500 3000 METRES 米

SCALE 1:15 000 比例尺

圖則編號  
Plan No.

LCCA/R/2021/KLN-E

二零二一年四月版

April 2021 Edition

選舉事務處刊印

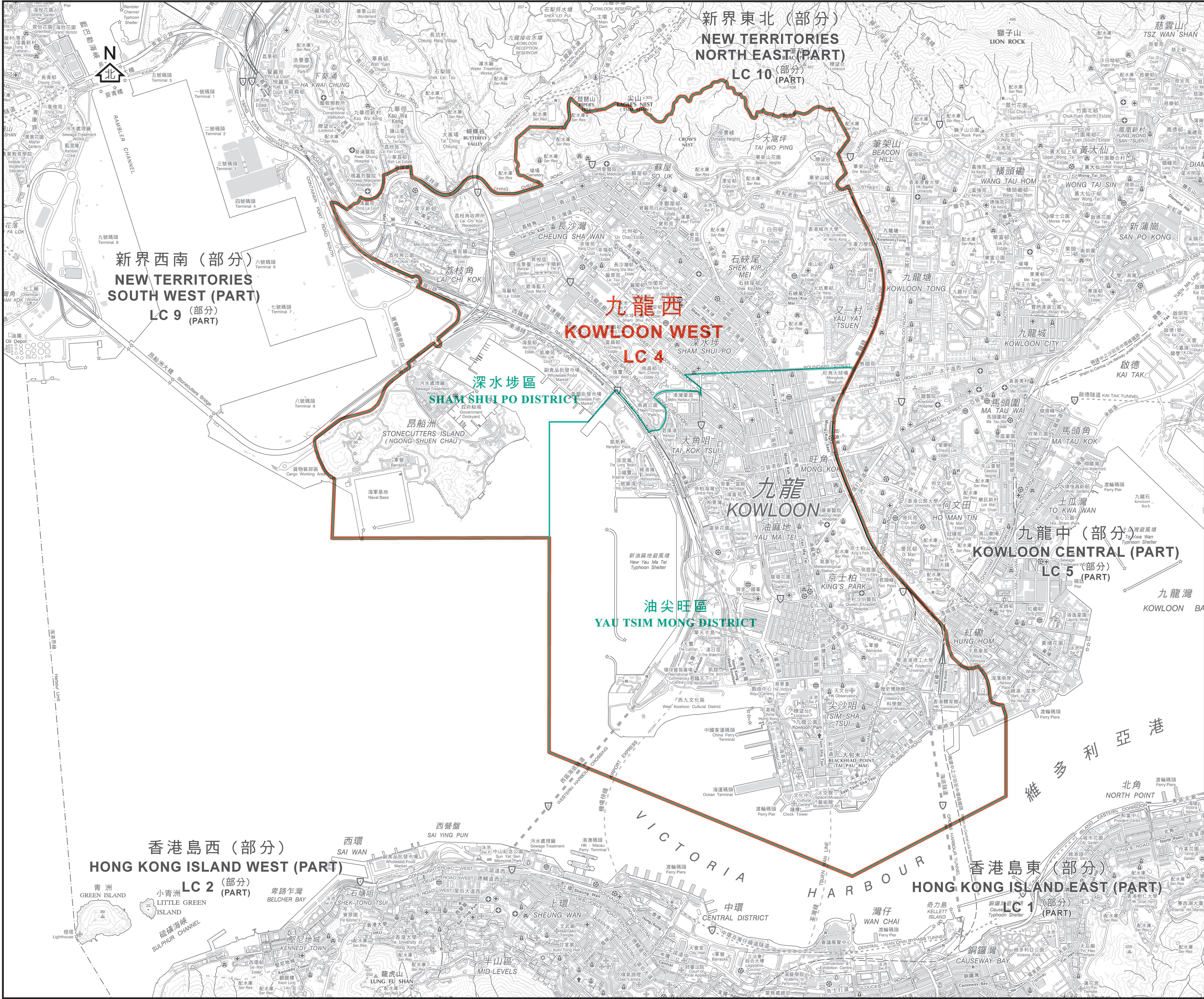
Published by the Registration and Electoral Office

版權所有 未經許可 不得複製 © 2021 Copyright reserved - reproduction by permission only

地政總署測繪處繪製

Cartography by Survey & Mapping Office, Lands Department





二零二一年立法會地方選區界線  
(與區界線重疊)

2021 Legislative Council  
Geographical Constituency Boundary  
(coincides with District Boundary)

二零二一年立法會地方選區界線  
2021 Legislative Council  
Geographical Constituency Boundary

區界線  
District Boundary

二零二一年立法會地方選區  
2021 Legislative Council Geographical Constituency

代號 Code	名稱 Name	所包括的地方行政區 Districts Included
LC 4	九龍西 Kowloon West	油尖旺區 Yau Tsim Mong District  深水埗區 Sham Shui Po District

行政長官會同行政會議根據《2021年完善選舉制度(綜合修訂)條例草案》就地方選區的劃定於二零二一年四月十三日通過此圖則

This was the plan approved by the Chief Executive in Council on 13 April 2021 for the purpose of delineating geographical constituencies specified under the Improving Electoral System (Consolidated Amendments) Bill 2021

二零二一年立法會地方選區分界圖 — 九龍西選區  
2021 LEGISLATIVE COUNCIL GEOGRAPHICAL CONSTITUENCY BOUNDARIES — KOWLOON WEST CONSTITUENCY

SCALE 1:15 000 比例尺

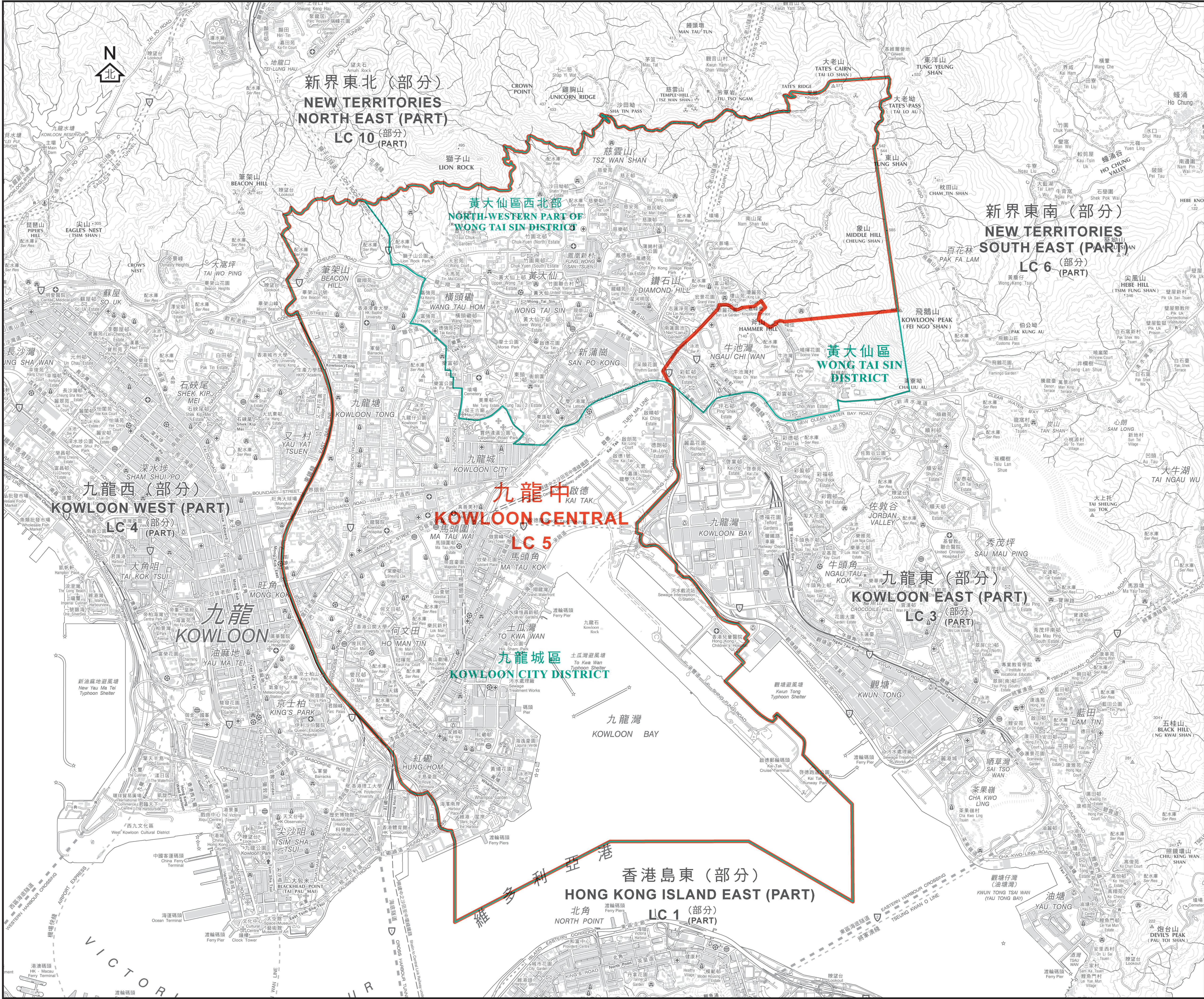
圖則編號  
Plan No. LCCA/R/2021/KLN-W

二零二一年四月版  
April 2021 Edition

選舉事務處刊印  
Published by the Registration and Electoral Office

版權所有 未經許可 不得複製 © 2021 Copyright reserved - reproduction by permission only  
地政總署測繪處繪製  
Cartography by Survey & Mapping Office, Lands Department





二零二一年立法會地方選區界線  
(與區界線重疊)

2021 Legislative Council  
Geographical Constituency Boundary  
(coincides with District Boundary)

二零二一年立法會地方選區界線  
2021 Legislative Council  
Geographical Constituency Boundary

區界線  
District Boundary

二零二一年立法會地方選區  
2021 Legislative Council Geographical Constituency

代號 Code	名稱 Name	所包括的地方行政區 Districts Included
LC 5	九龍中 Kowloon Central	九龍城區 Kowloon City District  黃大仙區西北部 <sup>2</sup> North-western part of Wong Tai Sin District <sup>2</sup>

<sup>2</sup> 所包括的區議會選區  
<sup>2</sup> District Council Constituency Areas Included

龍 趣	Lung Tsui
龍 下	Lung Ha
龍 上	Lung Sheung
鳳 凰	Fung Wong
鳳 德	Fung Tak
龍 星	Lung Sing
新 蒲 崗	San Po Kong
東 頭	Tung Tau
東 美	Tung Mei
樂 富	Lok Fu
橫 頭 磡	Wang Tau Hom
天 強	Tin Keung
翠 竹 及 鵬 程	Tsui Chuk & Pang Ching
竹 園 南	Chuk Yuen South
竹 園 北	Chuk Yuen North
慈 雲 西	Tsz Wan West
正 愛	Ching Oi
正 安	Ching On
慈 雲 東	Tsz Wan East
瓊 富	King Fu

行政長官會同行政會議根據《2021年完善選舉制度(綜合修訂)條例草案》就地方選區的劃定於二零二一年四月十三日通過此圖則

This was the plan approved by the Chief Executive in Council on 13 April 2021 for the purpose of delineating geographical constituencies specified under the Improving Electoral System (Consolidated Amendments) Bill 2021

二零二一年立法會地方選區分界圖 — 九龍中選區  
2021 LEGISLATIVE COUNCIL GEOGRAPHICAL CONSTITUENCY BOUNDARIES — KOWLOON CENTRAL CONSTITUENCY

SCALE 1:15 000 比例尺

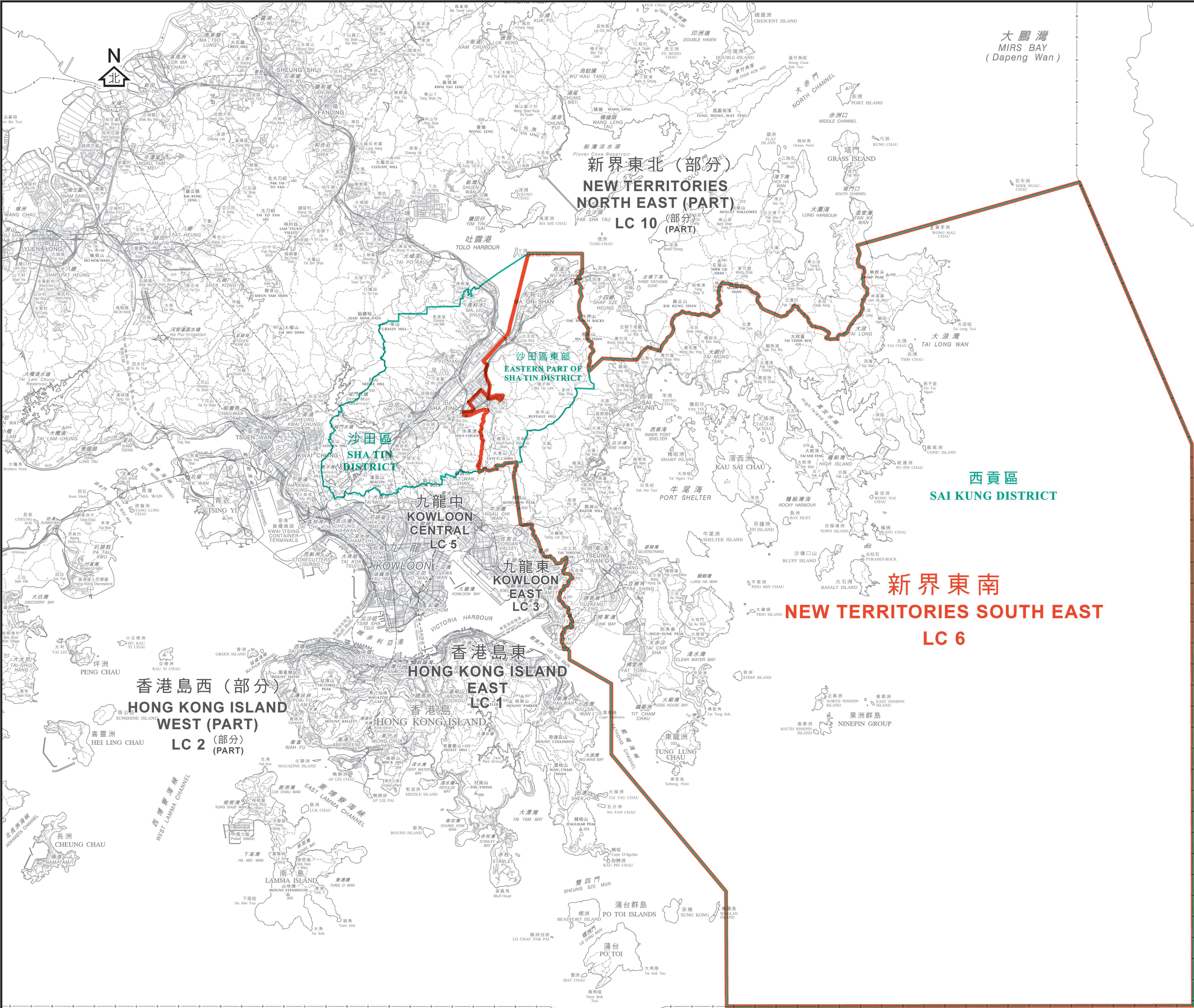
圖則編號 LCCA/R/2021/KLN-C  
Plan No.

二零二一年四月版 April 2021 Edition

選舉事務處刊印  
Published by the Registration and Electoral Office

版權所有 未經許可 不得複製 © 2021 Copyright reserved - reproduction by permission only  
地政總署測繪處繪製  
Cartography by Survey & Mapping Office, Lands Department





- 二零二一年立法會地方選區界線  
(與區界線重疊)
- 2021 Legislative Council  
Geographical Constituency Boundary  
(coincides with District Boundary)
- 二零二一年立法會地方選區界線
- 2021 Legislative Council  
Geographical Constituency Boundary
- 區界線
- District Boundary
- 特別行政區界
- Boundary of Special Administrative Region

二零二一年立法會地方選區 2021 Legislative Council Geographical Constituency		
代號 Code	名稱 Name	所包括的地方行政區 Districts Included
LC 6	新界東南 New Territories South East	西貢區 Sai Kung District  沙田區東部 <sup>3</sup> Eastern part of Sha Tin District <sup>3</sup>

<sup>3</sup> 所包括的區議會選區 <sup>3</sup> District Council Constituency Areas Included	
海嵐	Hoi Nam
顯安	Chung On
錦濤	Kam To
馬鞍山市中心	Ma On Shan Town Centre
烏溪沙	Wu Kai Sha
利安	Lee On
富龍	Fu Lung
錦英	Kam Ying
耀安	Yiu On
恆安	Heng On
大水坑	Tai Shui Hang
鞍泰	On Tai
愉欣	Yu Yan
廣康	Kwong Hong
廣源	Kwong Yuen

行政長官會同行政會議根據《2021年完善選舉制度(綜合修訂)條例草案》就地方選區的劃定  
於二零二一年四月十三日通過此圖則

This was the plan approved by the Chief Executive in Council on 13 April 2021 for the purpose of delineating geographical constituencies specified under the Improving Electoral System (Consolidated Amendments) Bill 2021

## 二零二一年立法會地方選區分界圖 — 新界東南選區

### 2021 LEGISLATIVE COUNCIL GEOGRAPHICAL CONSTITUENCY BOUNDARIES — NEW TERRITORIES SOUTH EAST CONSTITUENCY



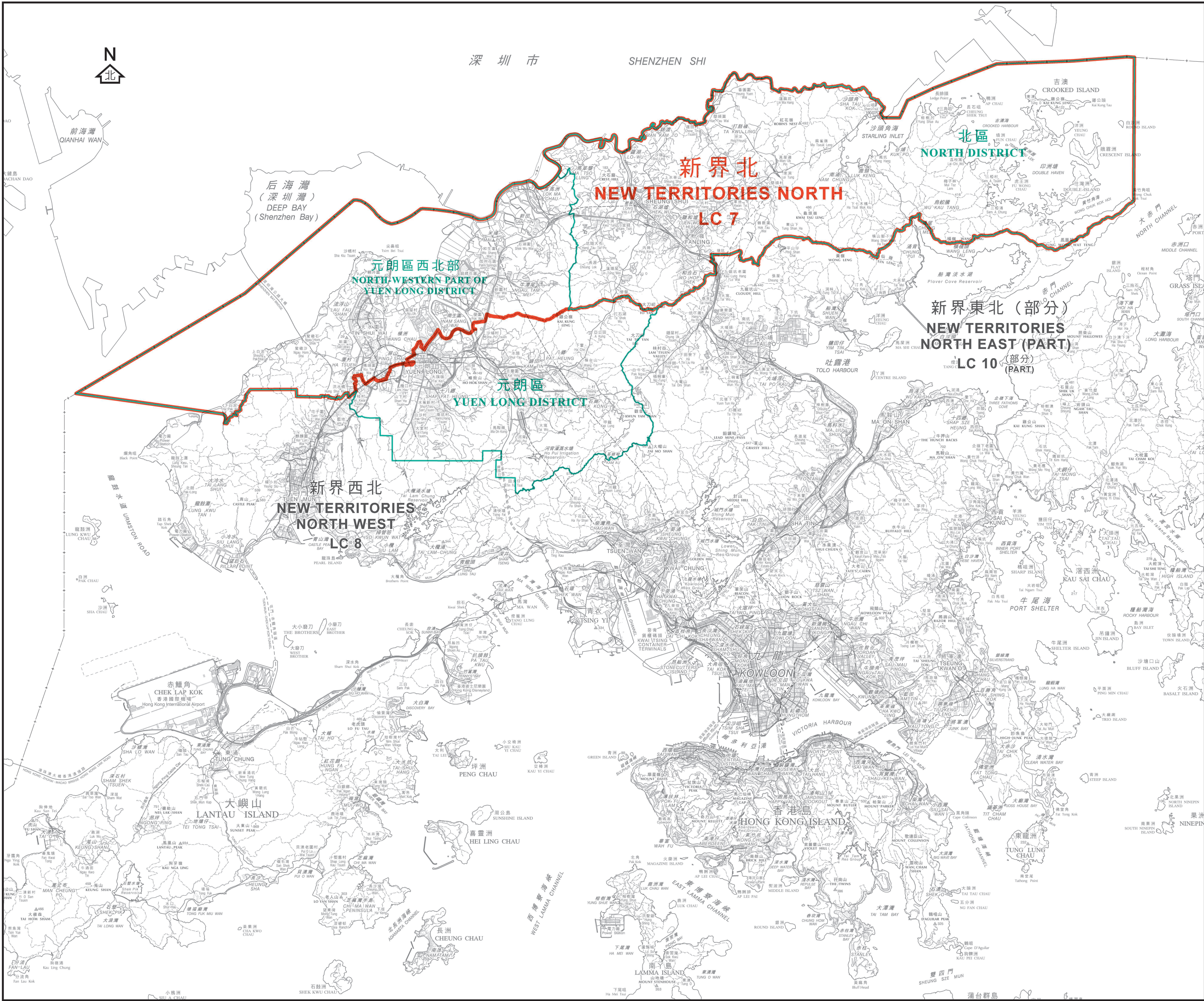
圖則編號  
Plan No. LCCA/R/2021/NT-SE

二零二一年四月版  
April 2021 Edition

選舉事務處刊印  
Published by the Registration and Electoral Office

版權所有 未經許可 不得複製 © 2021 Copyright reserved - reproduction by permission only  
地政總署測繪處繪製  
Cartography by Survey & Mapping Office, Lands Department





- 二零二一年立法會地方選區界線  
(與區界線重疊)
- 2021 Legislative Council  
Geographical Constituency Boundary  
(coincides with District Boundary)
- 二零二一年立法會地方選區界線
- 2021 Legislative Council  
Geographical Constituency Boundary
- 區界線  
District Boundary
- 特別行政區界  
Boundary of Special Administrative Region

二零二一年立法會地方選區  
2021 Legislative Council Geographical Constituency

代號 Code	名稱 Name	所包括的地方行政區 Districts Included
LC 7	新界北 New Territories North	北區 North District 元朗區西北部 <sup>4</sup> North-western part of Yuen Long District <sup>4</sup>

<sup>4</sup> 所包括的區議會選區  
<sup>4</sup> District Council Constituency Areas Included

廈村	Ha Tsuen
屏山中	Ping Shan Central
盛欣	Shing Yan
天盛	Tin Shing
天耀	Tin Yiu
耀祐	Yiu Yau
慈祐	Tsz Yau
嘉湖南	Kingswood South
瑞愛	Shui Oi
瑞華	Shui Wah
頌華	Chung Wah
頌栢	Chung Pak
嘉湖北	Kingswood North
悅恩	Yuet Yan
晴景	Ching King
富恩	Fu Yan
逸澤	Yat Chak
天恒	Tin Heng
宏逸	Wang Yat
屏山北	Ping Shan North
錦綸花園	Fairview Park
新田	San Tin

行政長官會同行政會議根據《2021年完善選舉制度(綜合修訂)條例草案》就地方選區的劃定  
於二零二一年四月十三日通過此圖則

This was the plan approved by the Chief Executive in Council on 13 April 2021 for the purpose of delineating geographical constituencies specified under the Improving Electoral System (Consolidated Amendments) Bill 2021

二零二一年立法會地方選區分界圖 — 新界北選區

2021 LEGISLATIVE COUNCIL GEOGRAPHICAL CONSTITUENCY BOUNDARIES — NEW TERRITORIES NORTH CONSTITUENCY

KILOMETERS 公里 2 0 2 4 6 8 10 12 14 16 KILOMETERS 公里

SCALE 1:80 000 比例尺

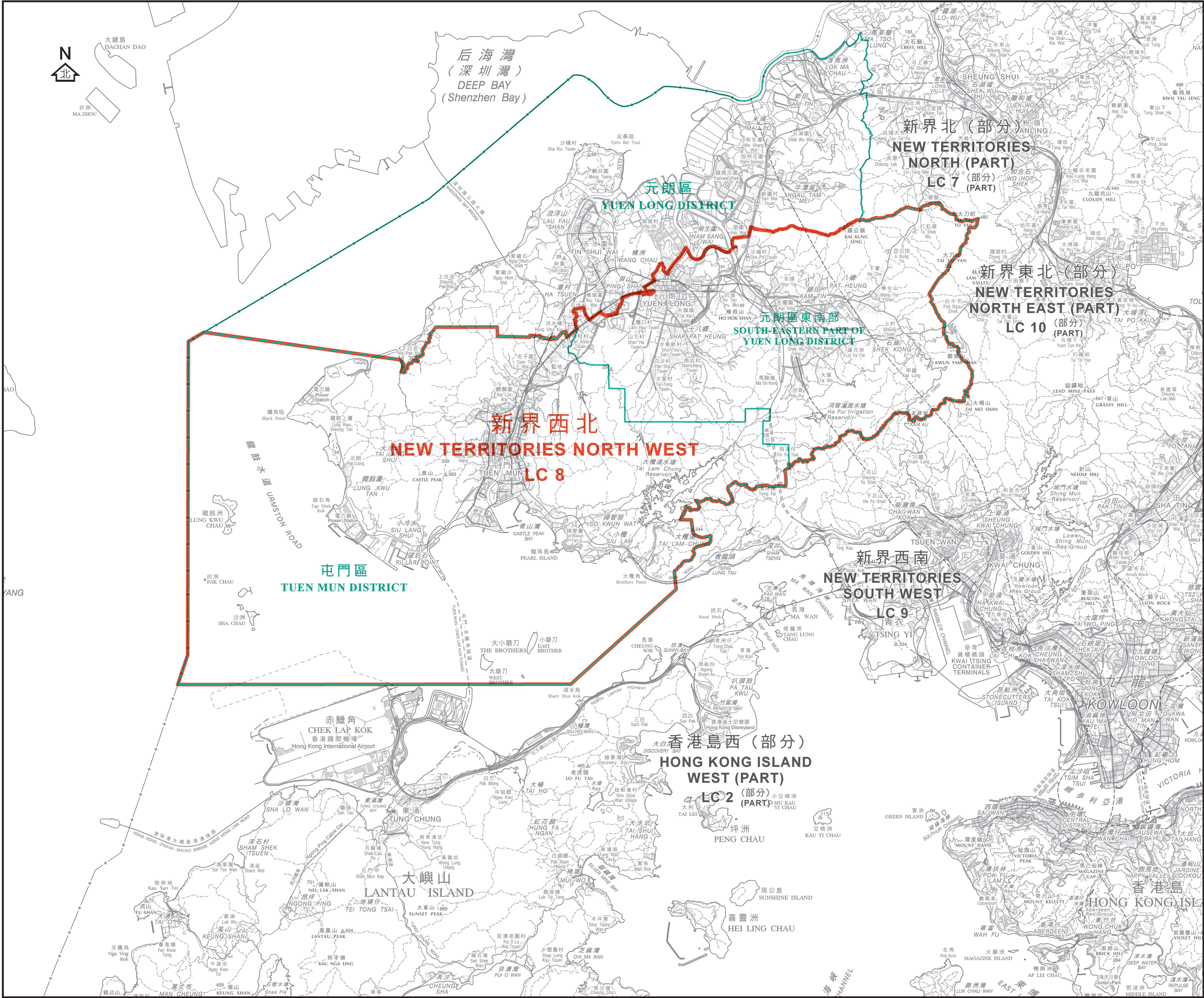
圖則編號 LCCA/R/2021/NT-N  
Plan No.

二零二一年四月版 April 2021 Edition

選舉事務處刊印  
Published by the Registration and Electoral Office

版權所有 未經許可 不得複製 © 2021 Copyright reserved - reproduction by permission only  
地政總署測繪處繪製  
Cartography by Survey & Mapping Office, Lands Department





- 二零二一年立法會地方選區界線  
(與區界線重疊)  
2021 Legislative Council  
Geographical Constituency Boundary  
(coincides with District Boundary)
- 二零二一年立法會地方選區界線  
2021 Legislative Council  
Geographical Constituency Boundary
- 區界線  
District Boundary
- 特別行政區界  
Boundary of Special Administrative Region

二零二一年立法會地方選區  
2021 Legislative Council Geographical Constituency

代號 Code	名稱 Name	所包括的地方行政區 Districts Included
LC 8	新界西北 New Territories North West	屯門區 Tuen Mun District 元朗區東南部 <sup>5</sup> South-eastern part of Yuen Long District <sup>5</sup>

<sup>5</sup> 所包括的區議會選區 <sup>5</sup> District Council Constituency Areas Included	
豐年	Fung Nin
元朗中心	Yuen Long Centre
鳳翔	Fung Cheung
元龍	Yuen Lung
十八鄉中	Shap Pat Heung Central
水邊	Shui Pin
南屏	Nam Ping
北朗	Pek Long
元朗東頭	Yuen Long Tung Tau
十八鄉北	Shap Pat Heung North
十八鄉東	Shap Pat Heung East
十八鄉西	Shap Pat Heung West
屏山南	Ping Shan South
洪福	Hung Fuk
錦田	Kam Tin
八鄉北	Pat Heung North
八鄉南	Pat Heung South

行政長官會同行政會議根據《2021年完善選舉制度(綜合修訂)條例草案》就地方選區的劃定於二零二一年四月十三日通過此圖則

This was the plan approved by the Chief Executive in Council on 13 April 2021 for the purpose of delineating geographical constituencies specified under the Improving Electoral System (Consolidated Amendments) Bill 2021

二零二一年立法會地方選區分界圖 — 新界西北選區  
2021 LEGISLATIVE COUNCIL GEOGRAPHICAL CONSTITUENCY BOUNDARIES — NEW TERRITORIES NORTH WEST CONSTITUENCY



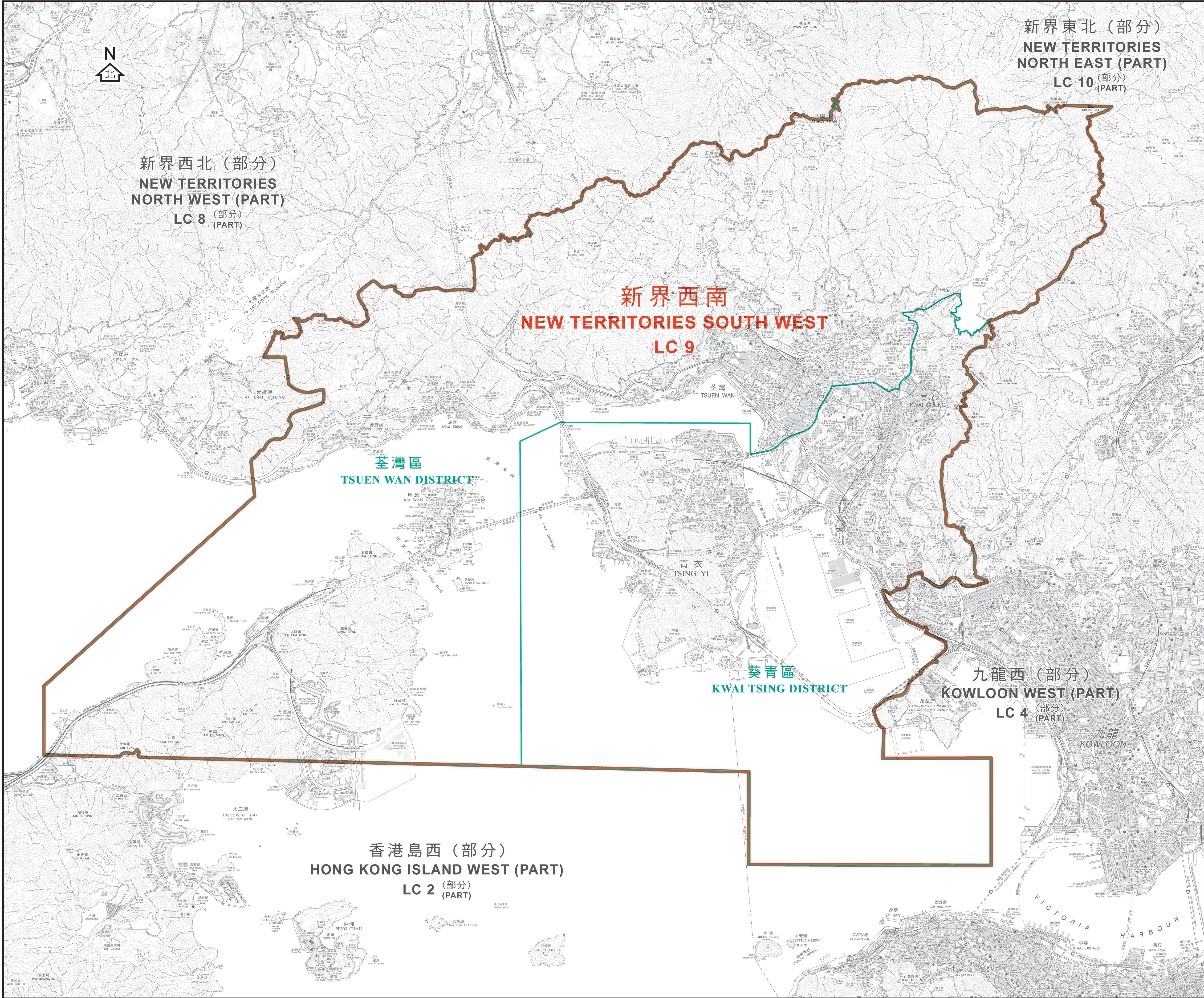
圖則編號  
Plan No. LCCA/R/2021/NT-NW

二零二一年四月版  
April 2021 Edition

選舉事務處刊印  
Published by the Registration and Electoral Office

版權所有 未經許可 不得複製 © 2021 Copyright reserved - reproduction by permission only  
地政總署測繪處繪製  
Cartography by Survey & Mapping Office, Lands Department





- 二零二一年立法會地方選區界線  
(與區界線重疊)  
2021 Legislative Council  
Geographical Constituency Boundary  
(coincides with District Boundary)
- 二零二一年立法會地方選區界線  
2021 Legislative Council  
Geographical Constituency Boundary
- 區界線  
District Boundary

二零二一年立法會地方選區  
2021 Legislative Council Geographical Constituency

代號 Code	名稱 Name	所包括的地方行政區 Districts Included
LC 9	新界西南 New Territories South West	葵青區 Kwai Tsing District  荃灣區 Tsuen Wan District

行政長官會同行政會議根據《2021年完善選舉制度(綜合修訂)條例草案》就地方選區的劃定於二零二一年四月十三日通過此圖則

This was the plan approved by the Chief Executive in Council on 13 April 2021 for the purpose of delineating geographical constituencies specified under the Improving Electoral System (Consolidated Amendments) Bill 2021

二零二一年立法會地方選區分界圖 — 新界西南選區

2021 LEGISLATIVE COUNCIL GEOGRAPHICAL CONSTITUENCY BOUNDARIES — NEW TERRITORIES SOUTH WEST CONSTITUENCY

METRES 米 500 0 500 1000 1500 2000 2500 3000 3500 4000 4500 5000 METRES 米

SCALE 1:30 000 比例尺

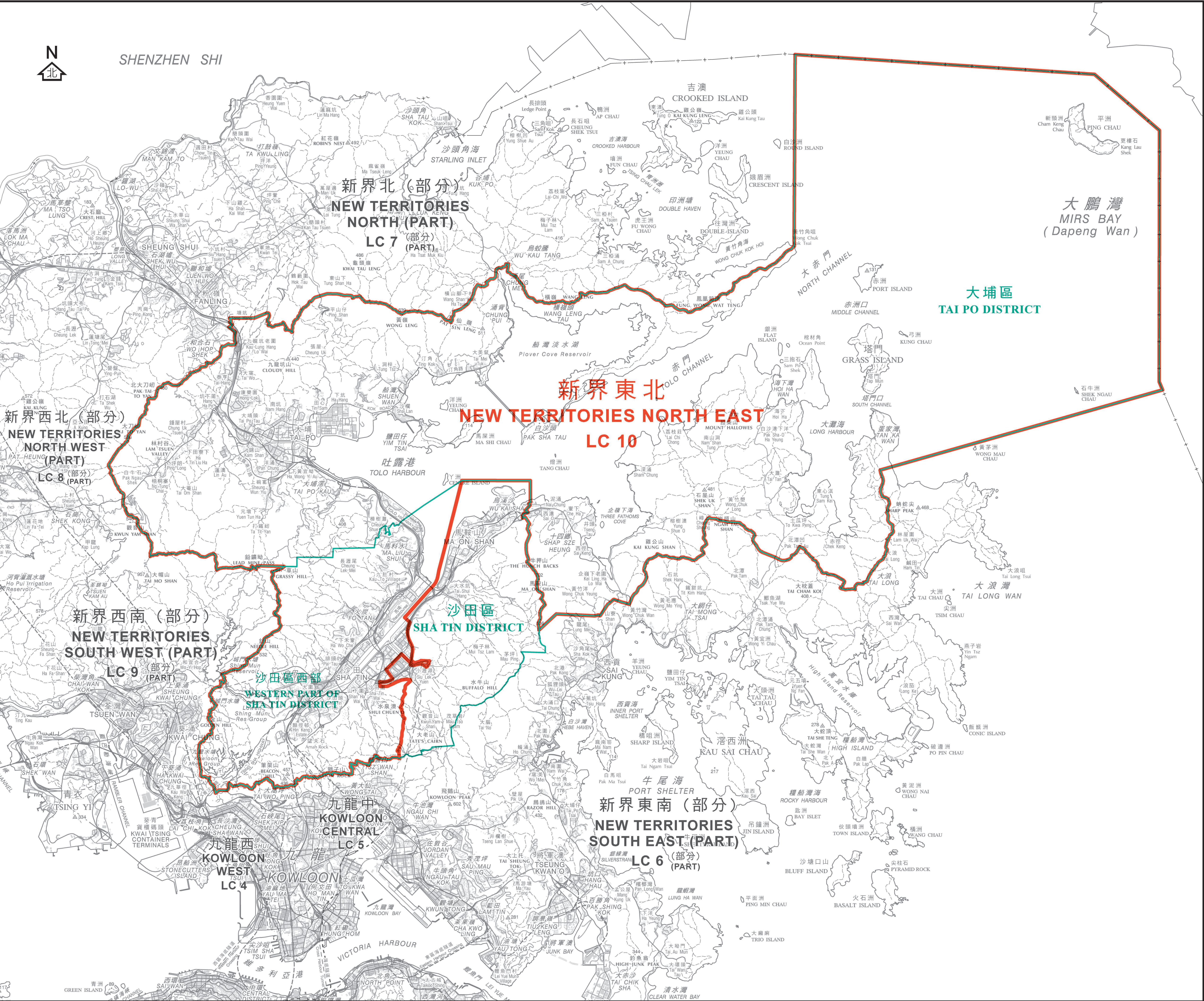
圖則編號 LCCA/R/2021/NT-SW  
Plan No.

二零二一年四月版 April 2021 Edition

選舉事務處刊印  
Published by the Registration and Electoral Office

版權所有 未經許可 不得複製 © 2021 Copyright reserved - reproduction by permission only  
地政總署測繪處繪製  
Cartography by Survey & Mapping Office, Lands Department





- 二〇二一年立法會地方選區界線 (與區界線重疊)
- 2021 Legislative Council Geographical Constituency Boundary (coincides with District Boundary)
- 二〇二一年立法會地方選區界線
- 2021 Legislative Council Geographical Constituency Boundary
- 區界線
- District Boundary
- 特別行政區界
- Boundary of Special Administrative Region

二〇二一年立法會地方選區 2021 Legislative Council Geographical Constituency		
代號 Code	名稱 Name	所包括的地方行政區 Districts Included
LC 10	新界東北 New Territories North East	大埔區 Tai Po District 沙田區西部 <sup>6</sup> Western part of Sha Tin District <sup>6</sup>

<sup>6</sup> 所包括的區議會選區 <sup>6</sup> District Council Constituency Areas Included	
沙田市中心	Sha Tin Town Centre
瀝源	Lek Yuen
禾輦邨	Wo Che Estate
第一城	City One
愉城	Yue Shing
王屋	Wong Uk
沙角	Sha Kok
博康	Pok Hong
水泉澳	Shui Chuen O
乙泉	Jat Chuen
秦豐	Chun Fung
新田圍	Sun Tin Wai
翠田	Chui Tin
顯嘉	Hin Ka
下城門	Lower Shing Mun
雲城	Wan Shing
徑口	Keng Hau
田心	Tin Sum
翠嘉	Chui Ka
大圍	Tai Wai
松田	Chung Tin
穗禾	Sui Wo
火炭	Fo Tan
駿馬	Chun Ma
帝怡	Di Yee
碧湖	Bik Woo

行政長官會同行政會議根據《2021年完善選舉制度(綜合修訂)條例草案》就地方選區的劃定  
於二〇二一年四月十三日通過此圖則  
This was the plan approved by the Chief Executive in Council on 13 April 2021 for the purpose of delineating geographical constituencies specified under the Improving Electoral System (Consolidated Amendments) Bill 2021

二〇二一年立法會地方選區分界圖 — 新界東北選區  
2021 LEGISLATIVE COUNCIL GEOGRAPHICAL CONSTITUENCY BOUNDARIES — NEW TERRITORIES NORTH EAST CONSTITUENCY



圖則編號 LCCA/R/2021/NT-NE  
Plan No.  
二〇二一年四月版 April 2021 Edition  
選舉事務處刊印  
Published by the Registration and Electoral Office  
版權所有 未經許可 不得複製 © 2021 Copyright reserved - reproduction by permission only  
地政總署測繪處繪製  
Cartography by Survey & Mapping Office, Lands Department